

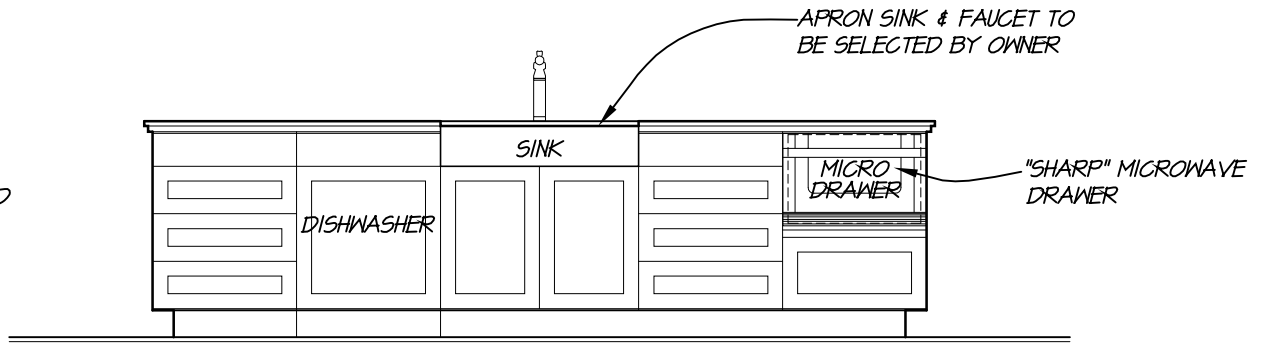
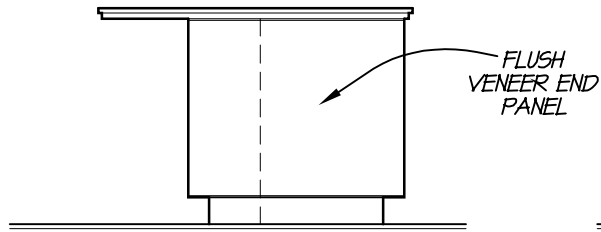
## ISLAND SOUTH

ELEVATION  $3/8" = 1'-0"$

NOTE: DIMENSIONS HERE ARE TO FINISH SURFACES & EDGES (INCLUDING FINISH FACE OF GYP. BD. AT WALLS)

ISLAND EAST ELEVATION  $3/8" = 1'-0"$

NOTE: DIMENSIONS HERE ARE TO FINISH SURFACES & EDGES (INCLUDING FINISH FACE OF GYP. BD. AT WALLS)  
NOT FOR CONSTRUCTION



## ISLAND NORTH

ELEVATION  $3/8" = 1'-0"$

NOTE: DIMENSIONS HERE ARE TO FINISH SURFACES & EDGES (INCLUDING FINISH FACE OF GYP. BD. AT WALLS)

ISLAND WEST ELEVATION  $3/8" = 1'-0"$

NOTE: DIMENSIONS HERE ARE TO FINISH SURFACES & EDGES (INCLUDING FINISH FACE OF GYP. BD. AT WALLS)  
NOT FOR CONSTRUCTION

03-09-09

P5